



Nano 2.4G Optical Mouse

RF-NANOMSE2/RF-NANO11/12/13

User Guide

Rocketfish

RF-NANOMSE2/RF-NANO11/12/13

Nano 2.4G Optical Mouse

Contents

Introduction	3
Features	4
Mouse LED status	6
Setting up the mouse	6
Configuring the mouse	13
Using the mouse.....	20
Maintaining	21
Troubleshooting	21
Specifications.....	21
Legal notices	22
One-year limited warranty	25

Introduction

Congratulations on your purchase of this Rocketfish mouse. This mouse represents the state of the art in wireless mouse design and is designed for reliable and trouble-free performance.

Important safety information

Before getting started, read these instructions and save them for future reference.

- Do not drop or hit your mouse.

- Do not use your mouse in a location that is subject to strong vibrations because vibration may damage your mouse.
- Do not disassemble or modify the product in any way. Disassembly or modification may void your warranty and could damage your mouse leading to fire or electric shock.
- Do not use or store your mouse in damp locations. Liquid entering the product may cause damage or lead to fire or electric shock.
- Do not insert metal objects, such as coins or paper clips, into your mouse.
- The mouse is a laser product. Do not directly look at the laser component while using the mouse. It may harm your eyes.
- Your mouse is for general computer use. Do not use your mouse with a computer that requires exceptional reliability, especially if a breakdown or malfunction might jeopardize life or health, such as aerospace equipment, atomic power control systems, traffic-related equipment, transportation equipment, industrial robotics, combustion equipment, safety devices, and life-support systems.

Features

- Scroll wheel
- Optical sensor
- Low battery consumption

Package contents

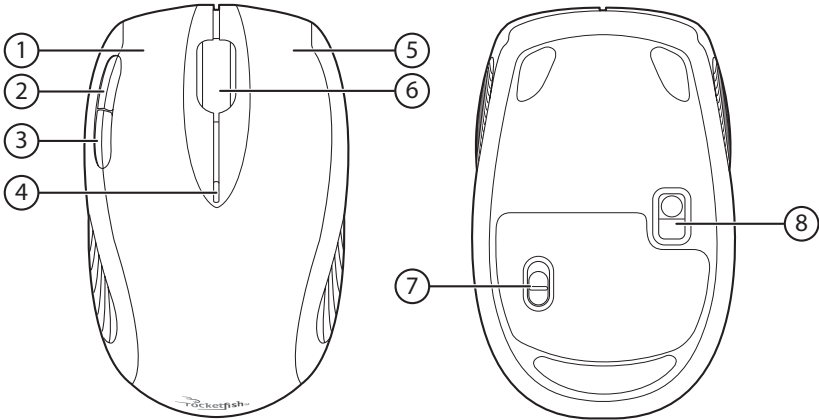
- Mouse
- Nano adapter (dongle)
- Quick Setup Guide
- AA battery x 1

System requirements

Your computer must meet these requirements:

- Microsoft® Windows® 7 32bit/64bit, Windows® VISTA 32bit/64bit, or Windows® XP 32bit/64bit
- One available USB port
- CD-ROM for software installation

Top and bottom



#	Component	Description
1	Left button	Press to perform standard left mouse actions such as selecting items and opening programs.
2	Forward Button	Press to go to the next page in a Web browser.
3	Back Button	Press to go to the previous page in a Web browser.
4	LED indicator	Indicates the current mouse state. <ul style="list-style-type: none"> • Off—The mouse is turned off. • Green—The mouse is turned on and the battery has a charge. • Flashing red—The battery charge is low and the battery needs to be replaced.
5	Right button	Press to perform standard right mouse actions such as opening popup menus or viewing help information.
6	Scroll wheel	Roll the scroll wheel to move the screen image up or down. If you press down on the scroll wheel, a four-way icon appears on the screen. Then move the mouse up, down, left, or right to scroll.
7	Power switch	Slide to turn the mouse on or off.
8	Optical sensor	Detects mouse movements and sends signals to the laptop to move the mouse pointer on the screen.

Mouse LED status

The following table lists the status of the mouse LED and its descriptions:

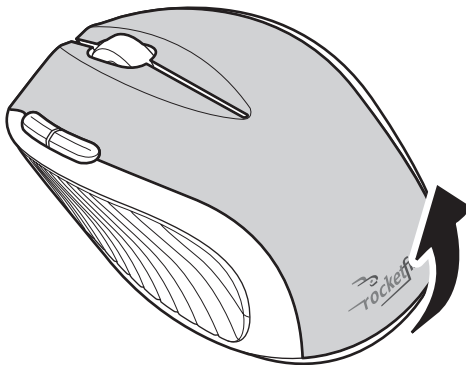
LED	Color	Description
Mouse LED	Green	If the battery voltage is greater than 1.1V, the LED will show green for three seconds then turns off.
	Flashing red	If the battery voltage is less than 1.1V, the LED will flash red for one minute, then turn off.
	Off	If the battery voltage is less than 1.0V, the LED will be off and the mouse will not work.

Setting up the mouse

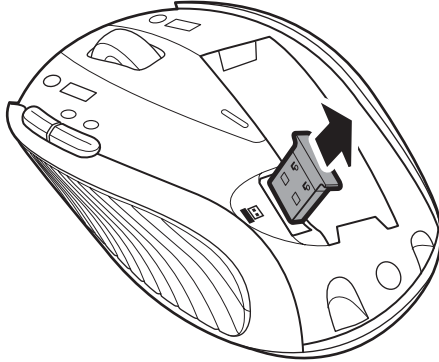
Installing the battery

To install the battery:

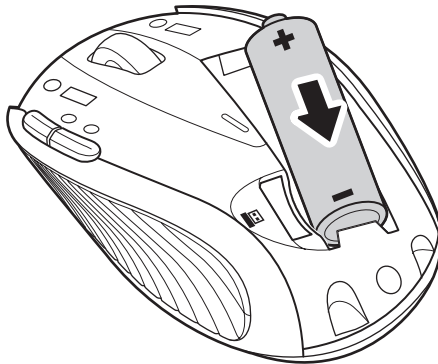
- 1 Press the tab on the battery compartment cover, then lift the cover away from the mouse.



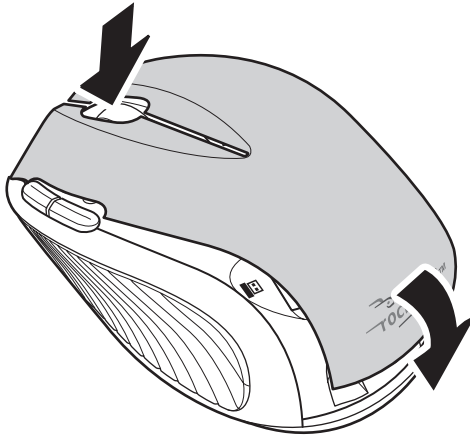
- 2 Pull the dongle out of the battery compartment.



- 3 Insert one AA battery into the battery compartment. Make sure that the + and - symbols on the battery match the + and - symbols in the battery compartment.



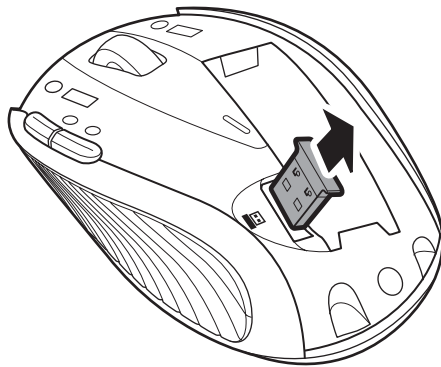
- 4 Replace the battery compartment cover.



Setting up the mouse

To set up the mouse:

- 1 Remove the dongle from inside the battery cover on the mouse.



- 2 Plug the USB dongle into a USB port on your computer.

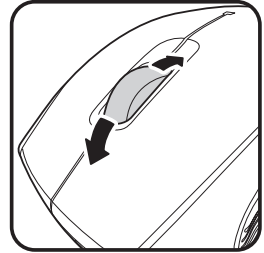


- 3 Slide the power button on the bottom of the mouse down to turn on the mouse. The computer detects the mouse.

Using the scroll wheel

Your mouse comes with an advanced scroll wheel that enables vertical window scrolling. Use the scroll wheel to scroll the screen vertically.

You can also press and hold the scroll button inwards. A two-way icon appears. Then move the mouse up or down to scroll the screen up or down.



Installing the mouse driver

To install the mouse driver:

- 1 Make sure that you have connected the dongle, installed the battery, and turned on the mouse.
- 2 Download the mouse driver from www.rocketfishproducts.com.
- 3 Open the file. The software should start automatically. If not, browse to the folder containing the file and double-click **autorun.exe** to begin installation. The initial menu screen opens.



- 4 Click **Install The Driver**. The *Welcome* screen opens.



- 5 Click **Next**. The *Start Installation* screen opens.



When the installation is complete, the *Setup Complete* screen opens.



6 Click **Finish**.

Uninstalling the mouse driver

To uninstall the mouse driver:

- 1 Click **Start, All Programs, Rocketfish Nano Laptop Optical Mouse**, then click **Uninstall Rocketfish Nano Laptop Optical Mouse Driver**. A message asks if you are sure you want to uninstall the driver.
- 2 Click **Yes** to continue. The *Remove Programs From Your Computer* screen opens and displays the progress.




- 3 When the uninstallation is complete, click **OK** to continue. The *Uninstall Complete* screen opens.



- 4 Click **Finish**. Your laptop restarts and the uninstallation is complete.

Configuring the mouse

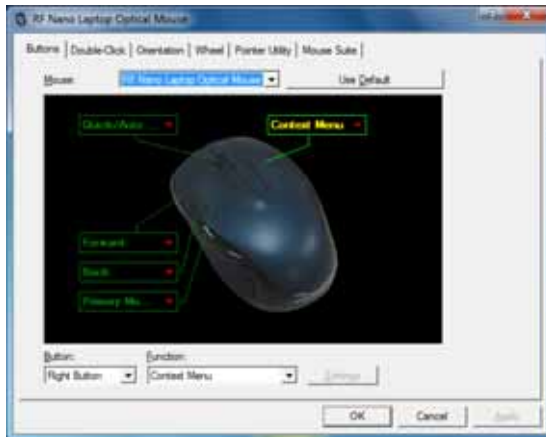
To configure the mouse:

- Double-click the mouse icon  on the system tray to open the mouse program.
- Or-
- Click **Start, All Programs, Rocketfish Nano Laptop Optical Mouse**, then click **Rocketfish Nano Laptop Optical Mouse Driver**.

Configuring mouse buttons

To configure the buttons:

- 1 Open the Rocketfish Nano Laptop Optical Mouse application.



- 2 Click the **Buttons** tab.
 - To change a button function, click the drop-down menu and select a function from the list.
 - To restore the default settings, click the **Use Default** button.
- 3 Click other tabs to configure other settings, or click **OK** to save changes and close the application.

Configuring the double-click option

To configure the double-click option:

- 1 Open the Rocketfish Nano Laptop Optical Mouse application.



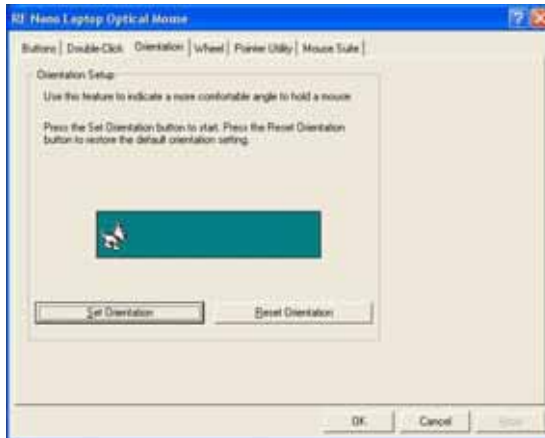
- 2 Click the **Double-Click** tab.
 - To adjust double-click speed, drag the slider.
 - To test the click speed, double-click the **Test Area** icon.
 - To restore to default settings, click **Reset to Default Value**.
- 3 Click other tabs to make more adjustments, or click **OK** to save your selections and close the program.

Adjusting the orientation

Use this tab to adjust the angle at which you use the mouse.

To configure the orientation:

- 1 Open the Rocketfish Nano Laptop Optical Mouse application.

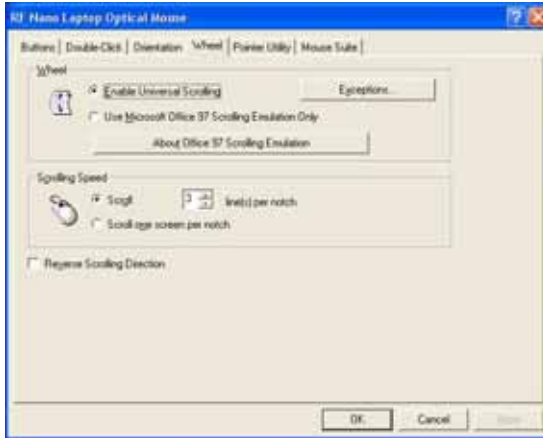


- 2 Click the **Orientation** tab.
 - Click the **Set Orientation** button to activate the orientation setup then follow the dog as it moves around.
 - To restore to default orientation settings, click the **Reset Orientation** button.
- 3 Click other tabs to configure other settings or click **OK** to save changes and close the application.

Adjusting the wheel settings

To adjust the wheel settings:

- 1 Open the Rocketfish Nano Laptop Optical Mouse application.

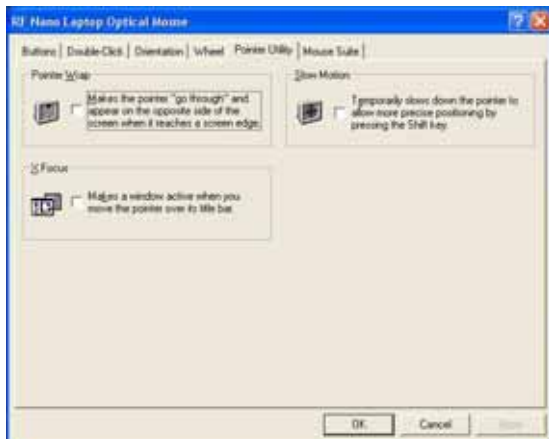


- 2 Click the **Wheel** tab.
 - To select the wheel scrolling method, click:
 - **Enable Universal Scrolling**—Uses common scrolling functions.
 - **Use Microsoft Office 97 Scrolling Emulation Only**—Uses Microsoft Office 97 scrolling emulation.
 - To specify scrolling exceptions, click **Exceptions**.
 - To adjust vertical scrolling speed, click:
 - **Scroll X line(s) per notch**—Selects the number of lines to scroll when the scroll wheel is moved one notch. Click the up or down arrow keys to specify the number of lines.
 - **Scroll one screen per notch**—Scrolls an entire screen when the scroll wheel is moved one notch.
 - To reverse scrolling direction, click **Reverse Scrolling Direction**.
- 3 Click other tabs to make more adjustments, or click **OK** to save your selections and close the program.

Adjusting pointer behavior

To adjust the pointer:

- 1 Open the Rocketfish Nano Laptop Optical Mouse application.

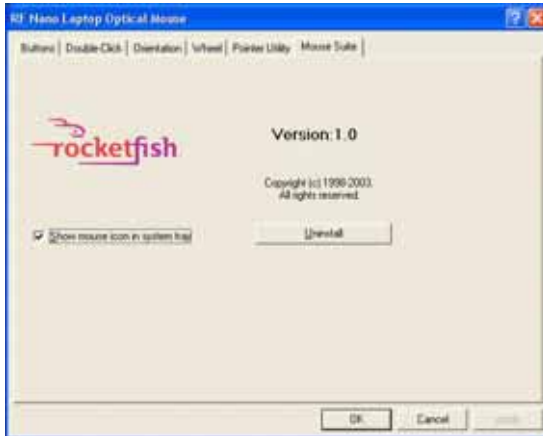


- 2 Click the **Pointer Utility** tab.
- 3 To enable the function, click the pointer options. You can select:
 - **Pointer Wrap**—The pointer goes to the opposite side of the screen when it reaches the screen edge.
 - **X Focus**—Activates a window when the pointer moves over the title bar.
 - **Slow Motion**—Slows down the pointer when the **Shift** key is pressed for a more precise positioning.
- 4 Click other tabs to make more adjustments, or click **OK** to save your selections and close the program.

About the mouse suite

To open the mouse suite:

- 1 Open the Rocketfish Nano Laptop Optical Mouse application.

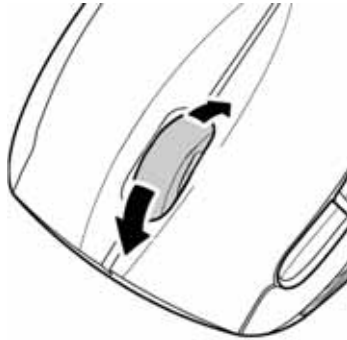


- 2 Click the **Mouse Suite** tab.
 - To hide the system tray's mouse icon, uncheck **Show mouse icon in systray**, then click **OK** to save changes and close application.
 - To uninstall the mouse application, click **Uninstall**. See "Uninstalling the mouse driver" on page 12.

Using the mouse

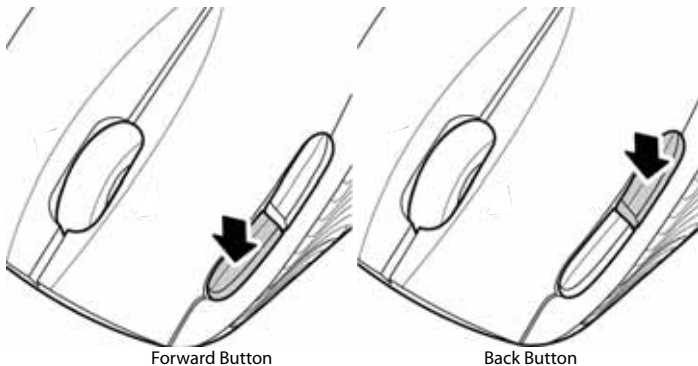
To use the mouse:

- 1 Press the left or right mouse buttons to perform standard left and right mouse clicks.
- 2 Move the scroll wheel to move the screen image up or down.



Tip: You can also scroll the screen by sliding your mouse instead of using the scroll wheel. To do this, press down on the scroll wheel. An icon appears on the screen. Move your mouse up or down to scroll.

- 3 Press the Forward Button to go to the next page in a Web browser or press the Back Button to go to the previous page in a Web browser.



Maintaining

To clean the mouse:

- Wipe the surface and the optical sensor with a soft, lint-free cloth slightly moistened with water.

Troubleshooting

If you experience any problems with the mouse, check the following:

- Make sure that your laptop meets the system requirements.
- Make sure that the battery in the optical mouse is installed correctly. Make sure the polarity of the battery corresponds with the polarity symbols inside the battery compartment.
- When the mouse LED lights red, the battery power is low. Replace the battery with a new one.
- If the laser mouse fails to work, check the USB port to see if the dongle is correctly connected.
- Only use the mouse on a clean, flat, non-slippery surface to ensure smooth and accurate cursor action.

For further assistance, contact your dealer.

Specifications

Specifications subject to change without notice.

Dimensions H × L × W	Mouse: 1.49 × 3.77 × 2.37 inches (37.77 × 95.75 × 60.24 mm)
Resolution	1200 dpi
Buttons	Five
Interface	USB dongle
Compatibility	Windows XP Windows Vista 32-bit or 64-bit Windows 7
Operating temperature	32°F to 104°F (0°C to 40°C)
Storage temperature	-40°F to 140°F (-40°C to 60°C)
Operating humidity	90% RH or less

Storage humidity	90% RH or less
Battery	AA (1)

Legal notices

FCC Statement

This equipment has been tested and found to comply with the limits for a Class B digital device, pursuant to part 15 of the FCC Rules. These limits are designed to provide reasonable protection against harmful interference in a residential installation. This equipment generates, uses and can radiate radio frequency energy and, if not installed and used in accordance with the instructions, may cause harmful interference to radio communications. However, there is no guarantee that interference will not occur in a particular installation. If this equipment does cause harmful interference to radio or television reception, which can be determined by turning the equipment off and on, the user is encouraged to try to correct the interference by one or more of the following measures:

- Reorient or relocate the receiving antenna.
- Increase the separation between the equipment and receiver.
- Connect the equipment into an outlet on a circuit different from that to which the receiver is connected.
- Consult the dealer or an experienced radio/ TV technician for help.

This device complies with RSS-210 of the IC Rules.

Operation is subject to the following two conditions:

- 1 This device may not cause harmful interference.
- 2 This device must accept any interference received, including interference that may cause undesired operation.

FCC warning

Changes or modifications not expressly approved by the party responsible for compliance with the FCC Rules could void the user's authority to operate this equipment.

Regulatory Compliance

This device complies with Part 15 of the FCC Rules. Operation is subject to the following two conditions: (1) This device may not cause harmful interference, and (2) This device must accept any interference received, including interference that may cause undesired operation.

This Device complies with RSS-210 of the IC Rules, Operation is subject to the following conditions:

- (1). This device may not cause interference and
- (2). This device must accept any interference received, including interference that may cause undesired operation.

One-year limited warranty

Rocketfish Products ("Rocketfish") warrants to you, the original purchaser of this new **RF-NANOMSE2/RF-NANO11/12/13** ("Product"), that the Product shall be free of defects in the original manufacture of the material or workmanship for one (1) year from the purchase of the Product ("Warranty Period"). This Product must be purchased from an authorized dealer of Rocketfish brand products and packaged with this warranty statement. This warranty does not cover refurbished Product. If you notify Rocketfish during the Warranty Period of a defect covered by this warranty that requires service, terms of this warranty apply.

How long does the coverage last?

The Warranty Period lasts for one year (365 days), beginning on the date you purchased the Product. The purchase date is printed on the receipt you received with the product.

What does this warranty cover?

During the Warranty Period, if the original manufacture of the material or workmanship of the Product is determined to be defective by an authorized Rocketfish repair center or store personnel, Rocketfish will (at its sole option): (1) repair the Product with new or rebuilt parts; or (2) replace the Product at no charge with new or rebuilt comparable products or parts. Products and parts replaced under this warranty become the property of Rocketfish and are not returned to you. If service of Products and parts are required after the Warranty Period expires, you must pay all labor and parts charges. This warranty lasts as long as you own your Rocketfish Product during the Warranty Period. Warranty coverage terminates if you sell or otherwise transfer the Product.

How to obtain warranty service?

If you purchased the Product at a retail store location, take your original receipt and the Product to the store you purchased it from. Make sure that you place the Product in its original packaging or packaging that provides the same amount of protection as the original packaging. If you purchased the Product from an online web site, mail your original receipt and the Product to the address listed on the web site. Make sure that you put the Product in its original packaging or packaging that provides the same amount of protection as the original packaging.

Where is the warranty valid?

This warranty is valid only to the original purchaser of the Product in the United States, Canada, and Mexico.

What does the warranty not cover?

This warranty does not cover:

- Customer instruction
- Installation
- Set up adjustments
- Cosmetic damage

- Damage due to acts of God, such as lightning strikes
- Accident
- Misuse
- Abuse
- Negligence
- Commercial use
- Modification of any part of the Product, including the antenna

This warranty also does not cover:

- Damage due to incorrect operation or maintenance
- Connection to an incorrect voltage supply
- Attempted repair by anyone other than a facility authorized by Rocketfish to service the Product
- Products sold as is or with all faults
- Consumables, such as fuses or batteries
- Products where the factory applied serial number has been altered or removed

REPAIR REPLACEMENT AS PROVIDED UNDER THIS WARRANTY IS YOUR EXCLUSIVE REMEDY. ROCKETFISH SHALL NOT BE LIABLE FOR ANY INCIDENTAL OR CONSEQUENTIAL DAMAGES FOR THE BREACH OF ANY EXPRESS OR IMPLIED WARRANTY ON THIS PRODUCT, INCLUDING, BUT NOT LIMITED TO, LOST DATA, LOSS OF USE OF YOUR PRODUCT, LOST BUSINESS OR LOST PROFITS. ROCKETFISH PRODUCTS MAKES NO OTHER EXPRESS WARRANTIES WITH RESPECT TO THE PRODUCT, ALL EXPRESS AND IMPLIED WARRANTIES FOR THE PRODUCT, INCLUDING, BUT NOT LIMITED TO, ANY IMPLIED WARRANTIES OF AND CONDITIONS OF MERCHANTABILITY AND FITNESS FOR A PARTICULAR PURPOSE, ARE LIMITED IN DURATION TO THE WARRANTY PERIOD SET FORTH ABOVE AND NO WARRANTIES, WHETHER EXPRESS OR IMPLIED, WILL APPLY AFTER THE WARRANTY PERIOD. SOME STATES, PROVINCES AND JURISDICTIONS DO NOT ALLOW LIMITATIONS ON HOW LONG AN IMPLIED WARRANTY LASTS, SO THE ABOVE LIMITATION MAY NOT APPLY TO YOU. THIS WARRANTY GIVES YOU SPECIFIC LEGAL RIGHTS, AND YOU MAY ALSO HAVE OTHER RIGHTS, WHICH VARY FROM STATE TO STATE OR PROVINCE TO PROVINCE.

Contact Rocketfish:

For customer service please call 1-800-620-2790
www.rocketfishproducts.com

Distributed by Best Buy Purchasing, LLC
 7601 Penn Avenue South, Richfield, Minnesota, U.S.A. 55423-3645
 © 2010 BBY Solutions, Inc.

All rights reserved. ROCKETFISH is a trademark of BBY Solutions, Inc. Registered in some countries. All other products and brand names are trademarks of their respective owners.

www.rocketfishproducts.com (800) 620-2790
Distributed by Best Buy Purchasing, LLC
7601 Penn Avenue South, Richfield, MN 55423-3645 USA
© 2010 BBY Solutions, Inc.

All rights reserved. ROCKETFISH is a trademark of BBY Solutions, Inc.
All other products and brand names are trademarks of their respective owners

10-0681
ENGLISH